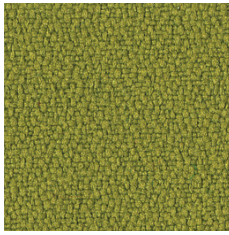


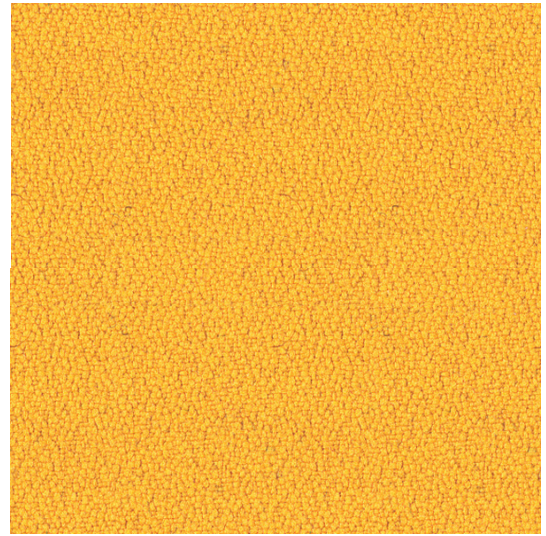
Cat. 2



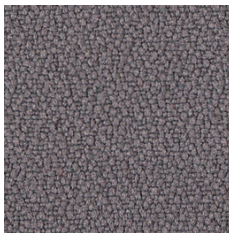
* YS077 Y40



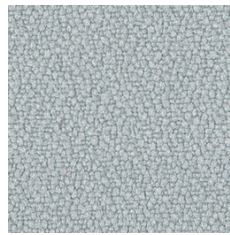
* YS108 Y87



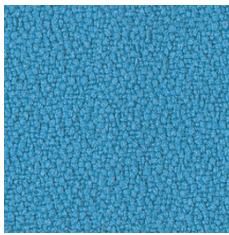
* YS072 Y38



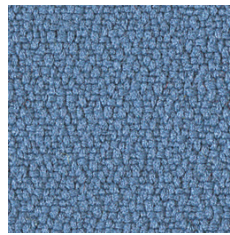
* YS081 Y42



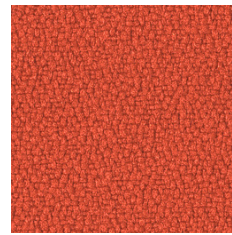
* YS094 Y52



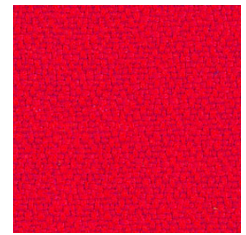
* YS073 Y94



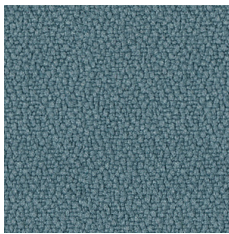
* YS004 Y51



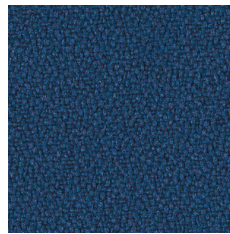
* YS076 Y47



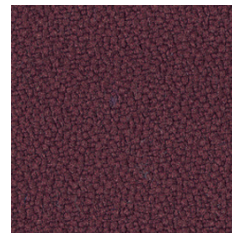
* YS105 Y65



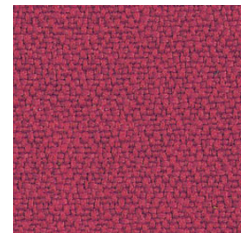
* YS171 Y58



* YS026 Y46



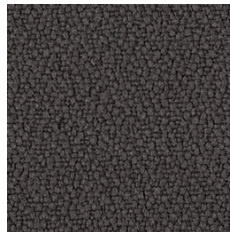
* YS030 Y49



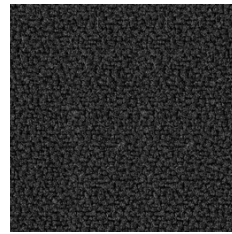
* YS101 Y57



* YS145 Y48



* YS046 Y59



* YS009 Y41

Xtreme plus



EN

Certified to the EU Ecolabel
Certified to OEKO-TEX® Standard 100
Certified to Indoor Advantage™ "Gold"
Made from 100% recycled Polyester
Non metallic dyestuffs

Composition
100% Polyester

Weight
310 g/m²

Abrasion resistance
100.000 Martindale cycles

Flammability
EN 1021-1 (cigarette)
EN 1021-2 (match)
BS 5852 Ignition Source 5
BS 7176 Medium Hazard
DIN 4102 B1
UNI 9175 Classe 1 IM
NF D 60-013
ÖNORM B 3825
ÖNORM A 3800-1
BS 476 Part 7 Class 1

Light fastness
6 (EN ISO 105-B02)

Fastness to rubbing
wet: 4; dry: 4 (ISO 105-X12)

FR

Certifié conforme à l'écolabel européen
Certifié conforme à la norme
OEKO-TEX® 100
Certifié Indoor Advantage™ Gold
Fabriqué à partir de Polyester 100 %
recyclés
Colorants non métalliques

Composition
100% Polyester

Poids
310 g/m²

Résistance à l'abrasion
100.000 Cycles de Martindale

Inflammabilité
EN 1021-1 (cigarette)
EN 1021-2 (allumette)
BS 5852 Ignition Source 5
BS 7176 Medium Hazard
DIN 4102 B1
UNI 9175 Classe 1 IM
NF D 60-013
ÖNORM B 3825
ÖNORM A 3800-1
BS 476 Part 7 Class 1

Stabilité à la lumière
6 (EN ISO 105-B02)

Résistance au frottement
humide: 4; sec: 4 (ISO 105-X12)

DE

Zertifiziert nach EU Ecolabel
Zertifiziert gemäß OEKO-TEX®
Standard 100
Zertifiziert gemäß Indoor Advantage™
„Gold“
Aus 100% recycelten Polyester
hergestellt
Nichtmetallische Farbstoffe

Zusammensetzung
100% Polyester

Gewicht
310 g/m²

Abriebfestigkeit
100.000 Martindale-Zyklen

Entflammbarkeit
BS EN 1021-1 (Zigarette)
BS EN 1021-2 (Streichholz)
BS 5852 Ignition Source 5
BS 7176 Medium Hazard
DIN 4102 B1
UNI 9175 Classe 1 IM
NF D 60-013
ÖNORM B 3825
ÖNORM A 3800-1
BS 476 Part 7 Class 1

Lichtgeschwindigkeit
6 (EN ISO 105-B02)

Reibechtheit
nass: 4; trocken: 4 (ISO 105-X12)

! Batch to batch variations in shade may occur within commercial tolerances.

! Des variations de teinte d'un lot à l'autre peuvent se produire dans le cadre des tolérances commerciales.

! Innerhalb der handelsüblichen Toleranzen können Farbabweichungen von Charge zu Charge auftreten.